

Wi-Fi Plug14

Quick Installation Guideline



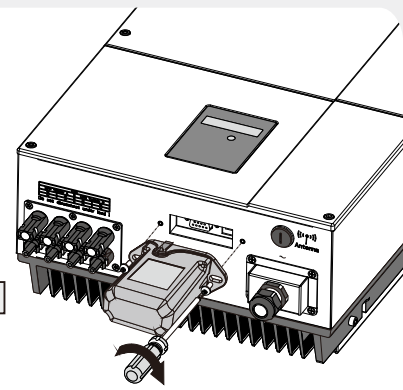
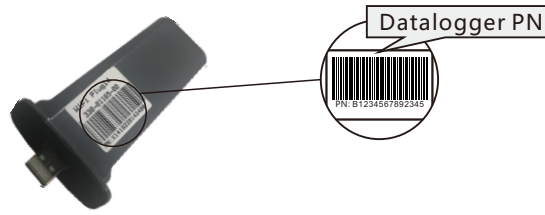
iOS



Android

1. Installation

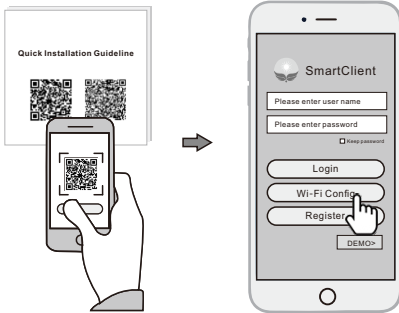
- ① Align the USB interface of the Wi-Fi Plug14 with the inverter and plug it in tightly.
- ② Fasten the Wi-Fi Plug14 to the inverter with the screw.
- ③ Confirm the status of the LED indicator (When you saw the orange LED light turn on from the shell, showing the normal working status).



2. Wireless Router Connection

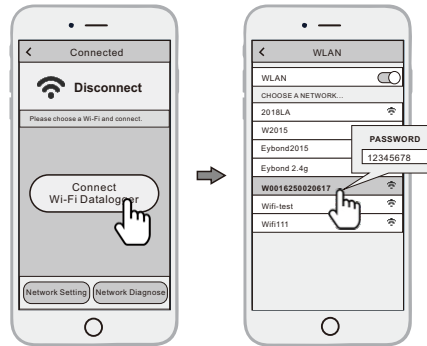
2.1 Download APP

- ① Scan the QR Code from the cover of this guideline and download the APP.
- ② Open the APP, tap the **Wi-Fi Config** button to enter this page.



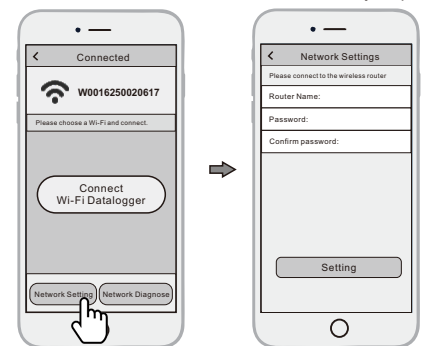
2.2 Connect Wi-Fi Datalogger

- ① Tap the **Connect Wi-Fi Datalogger** button on the Connected page. (Android phone has no need of this step).
- ② Select the same number of Wi-Fi Plug PN to connect. (Initial Password: 12345678)



2.3 Network Setting

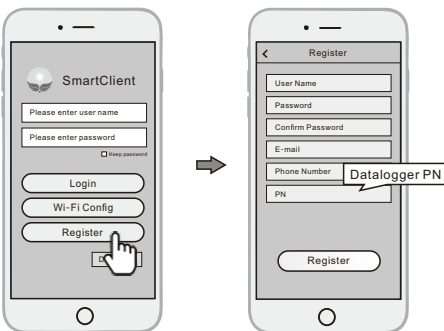
- ① After the connection completes, tap the **Network Setting** button.
- ② According to the prompts, type in the information to finish the network setting.
- ③ Reconnect the Wi-Fi or Cellular Data which can surf the Internet instead of the Wi-Fi connected by step 2.2.



3. Create Account And Plant

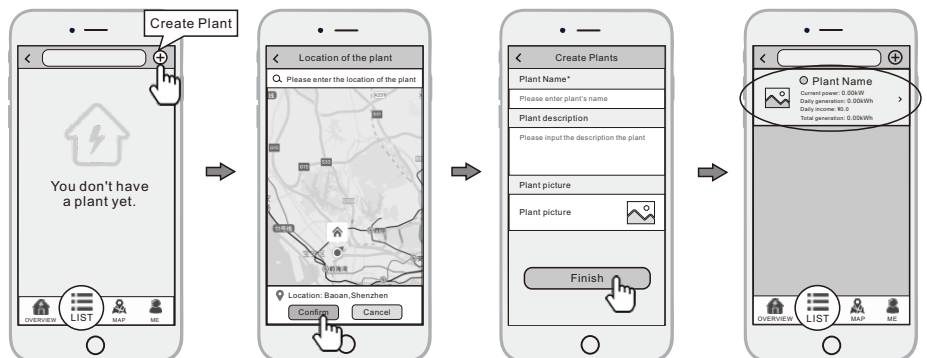
3.1 Create Account

- ① Open the APP, tap the **Register** button.
- ② According to the prompt information, complete creating an account.



3.2 Create Plant

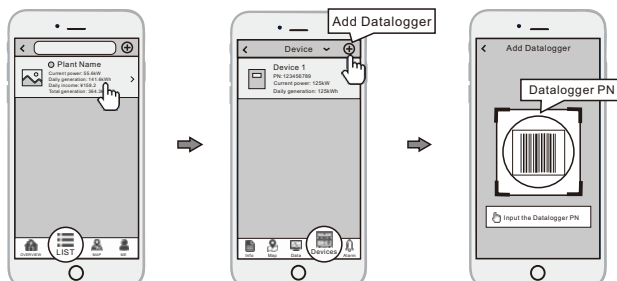
- ① Login the account and click the **list** button on the bottom of the home page.
- ② Tap the "+" button on the top-right corner of the list page.
- ③ According to the prompts, type in the information to finish creating plant.



3.3 Add Multiple Dataloggers

Note: One account can create multiple plants and one plant can add multiple dataloggers. If you only have one datalogger, you can ignore this step.

- ① Tap the new plant you just created, and enter its home page.
- ② Click the **Device** button on the bottom of the home page.
- ③ Tap the "+" button at the top-right corner to add the datalogger.
- ④ Scan the datalogger PN on the Wi-Fi Plug14, or input it manually.



Note: Besides the SmartClient APP, you're also can remote monitoring your plants by using WeChat mini program.



Scan the Wechat QR code to use the mini program.